

# Entry Rules

## Screenshot2

- Buy signal of a particular pair will be generated once all the selected trigger and/or filter agree in up (if pair is selected). (Refer to screenshot4,5)

- Example:

- 1) Price up crosses MA1



- 2) All Filter\_S agree in green: Price, MA1, MA2, and M3 move up;
  - 3) All selected Filter\_D agree in green: Price>MA1>MA2>MA3

- Sell signal of a particular pair will be generated once all the selected trigger and/or filter agree in down (if pair is selected). (Refer to screenshot4,5)

- Example:

- 1) Price downcrosses MA1



- 2) All Filter\_S agree in red: Price, MA1, MA2, and M3 move down;
  - 3) All selected Filter\_D agree in red: Price<MA1<MA2<MA3

[illegible]

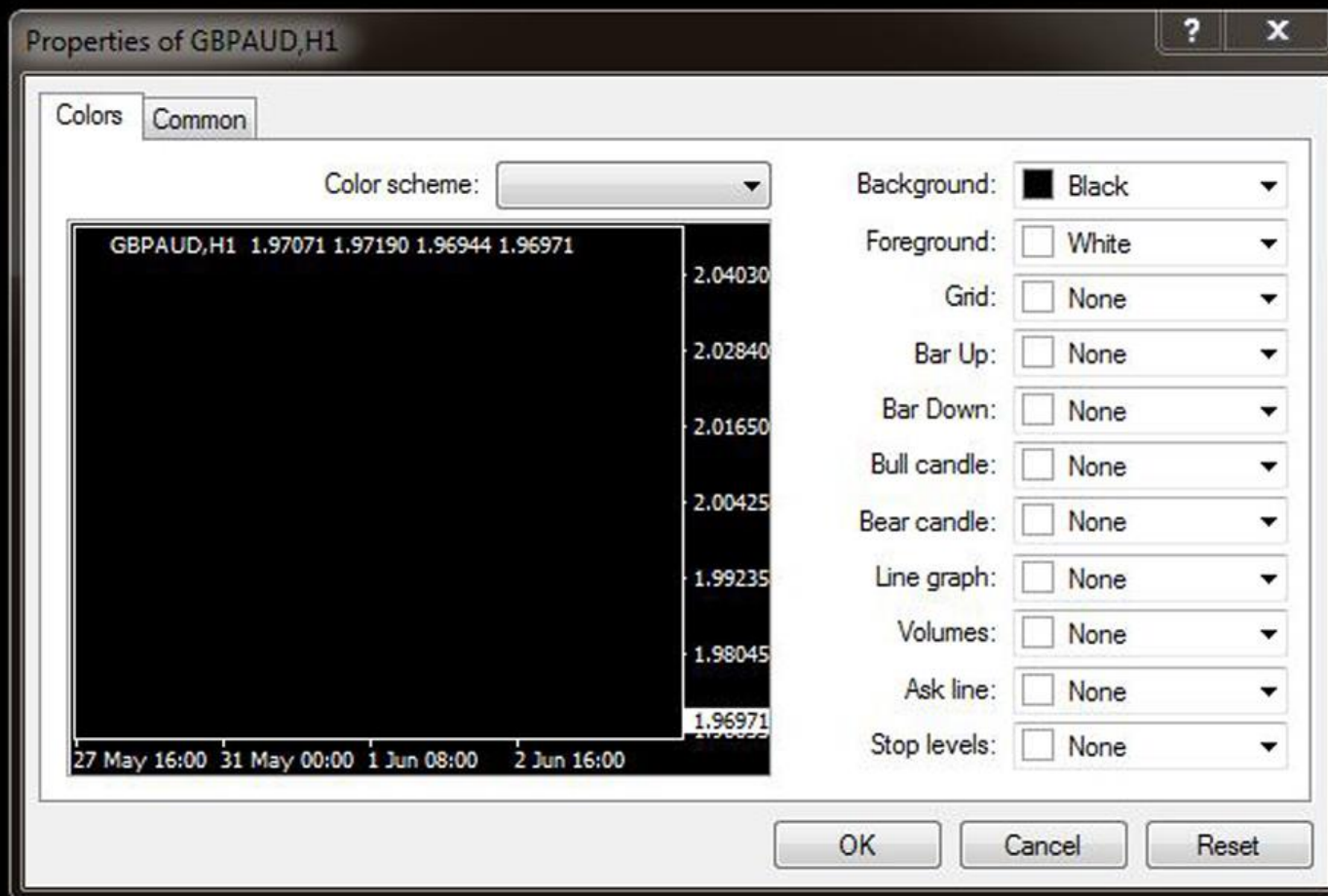
## Screenshot4



# Screenshot5



GBPAUD,H1 1.97071 1.97190 1.96944 1.96971



Screenshot6

6 May 2016 9 May 08:00 10 May 16:00 12 May 00:00 13 May 08:00 16 May 16:00 18 May 00:00 19 May 08:00 20 May 16:00 24 May 00:00 25 May 08:00 26 May 16:00 30 May 04:00

GBPAUD,H1

EURUSD,M1

#### 4 Trigger/ Filter Tick Status Panel

Trading

1 Pair Tick Button


2 Pair Symbol Button

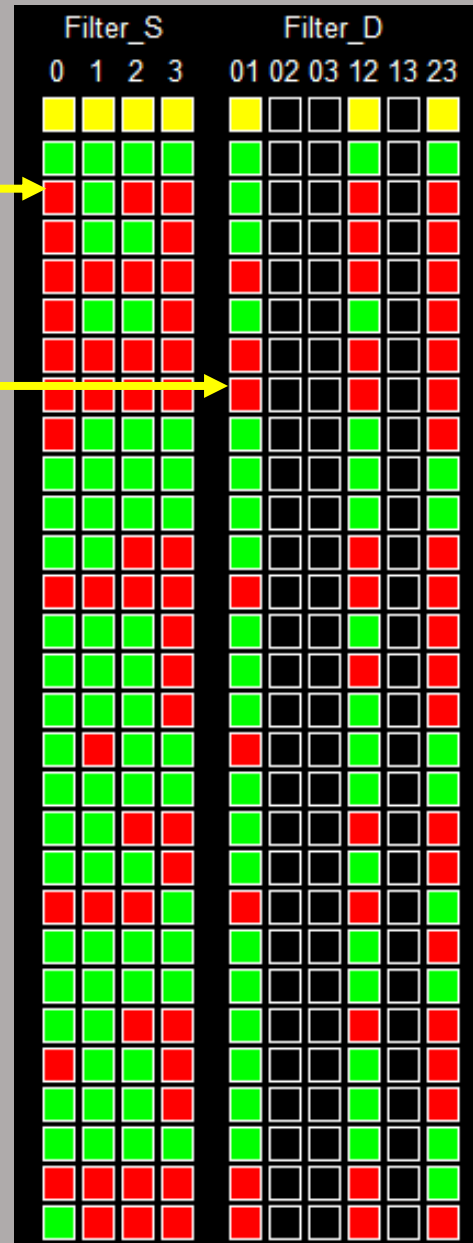
3 Spread Column

5 Trigger Signal Status Panel

	Pair	Sprd	01	02	03	12	13	23
	AUDCAD	1.3						
	AUDCHF	2.5						
	AUDJPY	3.7						
	AUDNZD	3.3						
	AUDUSD	0.8						
	CADCHF	2.4						
	CADJPY	3.1						
	CHFJPY	5.3						
	EURAUD	2.4						
	EURCAD	1.9						
	EURCHF	2.0						
	EURGBP	2.0						
	EURJPY	3.0						
	EURNZD	4.2						
	EURUSD	0.3						
	GBPAUD	8.2						
	GBPCAD	9.3						
	GBPCHF	4.6						
	GBPJPY	7.4						
	GBPNZD	12.4						
	GBPUSD	3.5						
	NZDCAD	4.4						
	NZDCHF	3.3						
	NZDJPY	3.7						
	NZDUSD	1.2						
	USDCAD	0.9						
	USDCHF	1.4						
	USDJPY	1.9						

## 6 Filter\_S Signal Status Panel

7 Filter\_D Signal Status Panel 







Age Group	Percentage
18-24	35%
25-34	25%
35-44	15%
45-54	10%
55-64	8%
65-74	5%
75-84	3%
85+	2%

Age Group	Percentage
18-24	10%
25-34	20%
35-44	25%
45-54	20%
55-64	15%
65-74	10%
75-84	5%
85+	5%

	Buy	Sell	Symbol	Profit
  	0.00	0.00	AUDCAD	0.00
  	0.00	0.00	AUDCHF	0.00
  	0.00	0.00	AUDJPY	0.00
  	0.00	0.00	AUDNZD	0.00
  	0.00	0.00	AUDUSD	0.00
  	0.00	0.00	CADCHF	0.00
  	0.00	0.00	CADJPY	0.00
  	0.00	0.00	CHFJPY	0.00
  	0.00	0.00	EURAUD	0.00
  	0.00	0.00	EURCAD	0.00
  	0.00	0.00	EURCHF	0.00
  	0.00	0.00	EURGBP	0.00
  	0.00	0.00	EURJPY	0.00
  	0.00	0.00	EURNZD	0.00
  	0.00	0.00	EURUSD	0.00
  	0.00	0.00	GBPAUD	0.00
  	0.00	0.00	GBPCAD	0.00
  	0.00	0.00	GBPCHF	0.00
  	0.00	0.00	GBPJPY	0.00
  	0.00	0.00	GBPNZD	0.00
  	0.00	0.00	GBPUSD	0.00
  	0.00	0.00	NZDCAD	0.00
  	0.00	0.00	NZDCHF	0.00
  	0.00	0.00	NZDJPY	0.00
  	0.00	0.00	NZDUSD	0.00
  	0.00	0.00	USDCAD	0.00
  	0.00	0.00	USDCHF	0.00
  	0.00	0.00	USDJPY	0.00



← 0.00





15 Profit Baskets

Profit Baskets=

0

16 Basket TP

Basket TP = \$

15.00

Highest= \$

0.00

17 Basket Highest

18 Loss Baskets

Loss Baskets=

0

19 Basket SL

Basket SL = \$-

15.00

Lowest= \$-

0.00

20 Basket Lowest

21 Current Basket  
Profit

0.00

Screenshot10

22 Close All

CLOSE ALL

CLOSE PROFIT

CLOSE LOSS

23 Close Profit

24 Close Loss

Trading

25 Session Monitor Panel

26 AutoTrade Monitor Panel

27 Pair/Currency Selection Button

Screenshot11

AutoTrade

ON

All

None

EUR

USD

GBP

JPY

AUD

CAD

NZD

CHF

## Screenshot12

Variable	Value
Use AutoTrade	false
Send Alert upon Signal	false
Send Notification upon Singal	false
Single pair TP in pips (0=no TP)	25.0
Single pair SL in pips (0=no SL)	25.0
Use trigger Price cross MA1	true
Use trigger Price cross MA2	false
Use trigger Price cross MA3	false
Use trigger MA1 cross MA2	false
Use trigger MA1 cross MA3	false
Use trigger MA2 cross MA3	false
Use Price as Single Trend Filter	true
Use MA1 as Single Trend Filter	true
Use MA2 as Single Trend Filter	true
Use MA3 as Single Trend Filter	true
Use Price-MA1 as Double Trend Filter	true
Use Price-MA2 as Double Trend Filter	false
Use Price-MA3 as Double Trend Filter	false
Use MA1-MA2 as Double Trend Filter	true
Use MA1-MA3 as Double Trend Filter	false
Use MA2-MA3 as Double Trend Filter	true
MA Timeframe of MA1/MA2/MA3	MA_H1
MA Period of MA1	8
MA Method of MA1	EMA
MA Applied Price of MA1	MA_Close_Price
MA Period of MA2	24
MA Method of MA2	EMA
MA Applied Price of MA2	MA_Close_Price
MA Period of MA3	72
MA Method of MA3	EMA
MA Applied Price of MA3	MA_Close_Price
Magic Number	12345
Lot Size	0.01
Basket TP in \$	15
Basket SL in \$	15
M...	2.0

Once alert/notification of a particular pair has been sent, the next alert/notification of that pair will be sent after 5 minutes upon signal.

Basket means all active (open) positions opened by this dashboard with the same magic number. The basket profit is the total profit of all these active positions

# Backup Slides

- B

# Entry Rules

## Screenshot1

### Explanation of number and symbol

- **Number:**

0	1	2	3
Current Price	MA1	MA2	MA3

  - .
- **Trigger: cross**
  - **Trigger01:** Price cross MA1. Up cross->panel green; down cross->panel red
  - **Trigger12:** MA1 cross MA2. Up cross->panel green; down cross->panel red
- **Filter\_S: filter single, one-component trend filter**
  - **Filter\_S0: Price trend**
    - Up price trend ( $\text{price\_current} \geq \text{price\_previous}$ ) -> panel green
    - Down price trend ( $\text{price\_current} < \text{price\_previous}$ ) -> panel red
  - **Filter\_S1: MA1 trend**
    - Up MA1trend ( $\text{MA1\_current} \geq \text{MA1\_previous}$ ) -> panel green
    - Down MA1 trend ( $\text{MA1\_current} < \text{MA1\_previous}$ ) -> panel red
- **Filter\_D: filter double, two-component trend filter**
  - **Filter\_D01: Price-MA1 trend**
    - Up Price-MA1 trend ( $\text{price\_current} \geq \text{MA1\_previous}$ ) -> panel green
    - Down Price-MA1 trend ( $\text{price\_current} < \text{MA1\_previous}$ ) -> panel red

## **Note**

**Note1:** Basket means all active (open) positions opened by this dashboard with the same magic number. The basket profit is the total profit of all these active positions. e.g. Dashboard open 10 positions (not close yet), each order has a profit of \$2. So the total profit is  $10 * \$2 = \$20$ . If the basket take profit is \$20, then the basket TP will be hit.

**Note2:** autotrade will open at most 1 position per pair based on signal generated. If signal occurs but position already exists for a particular pair, no order will be sent. However, you can manually click on 'buy' and/or 'sell' button to any number of positions you want (click once send one order).

**Note3:** Once alert/notification of a particular pair has been sent, the next alert/notification of that pair will be sent after 5 minutes upon signal. The alert and notification are implemented in this way to make sure you receive them once during a certain period instead of numerous alerts/notification coming to you continuously.

## **Screenshot12**